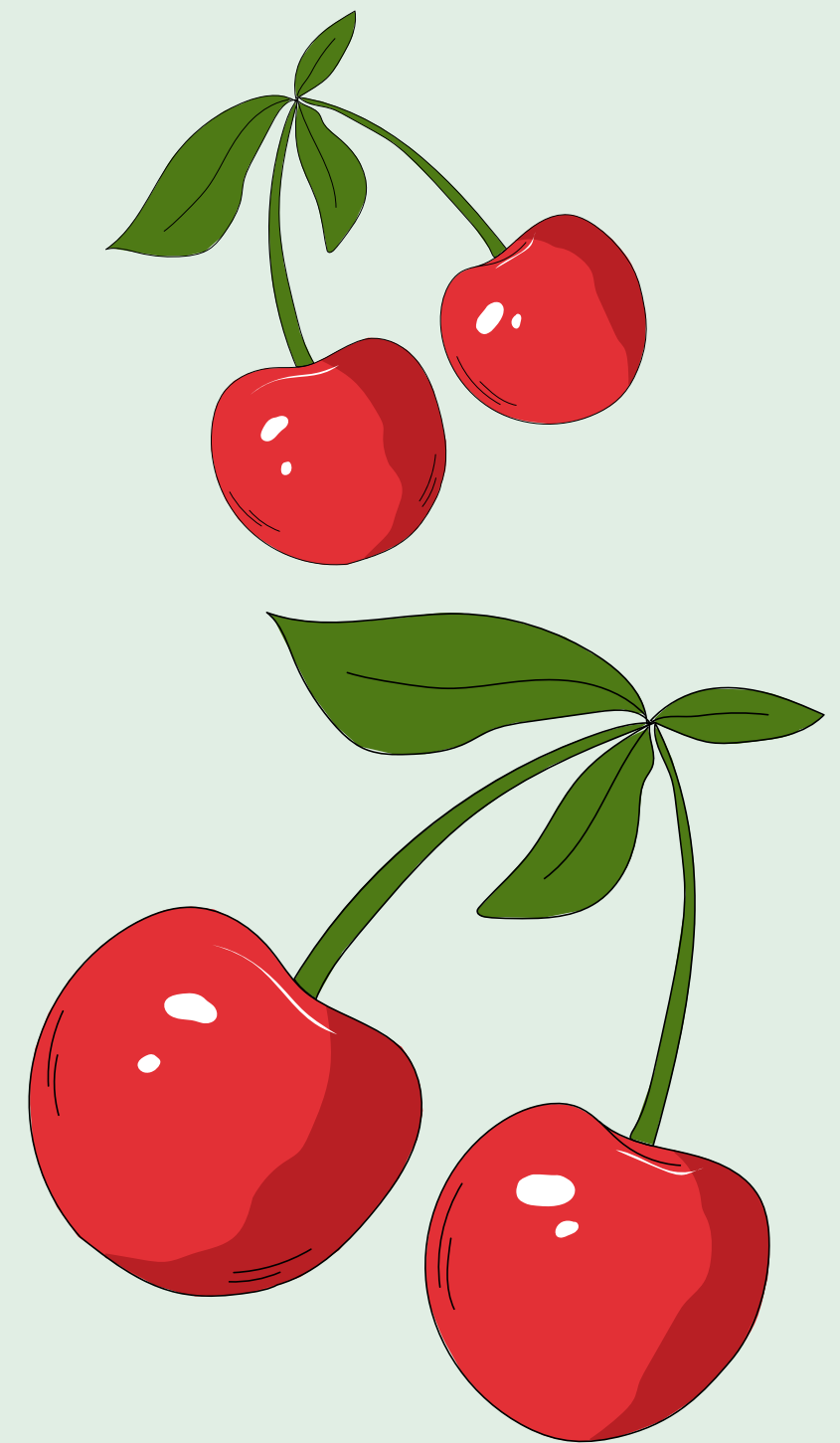
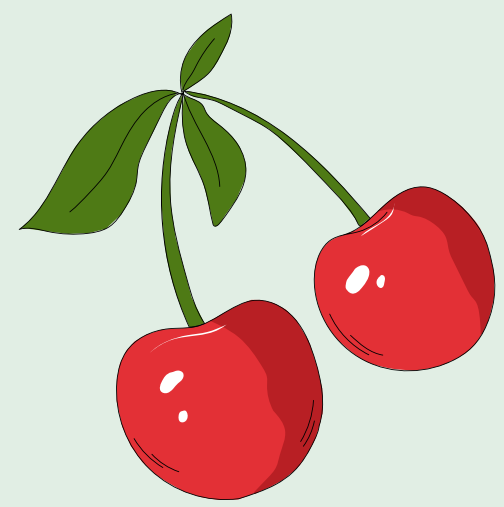




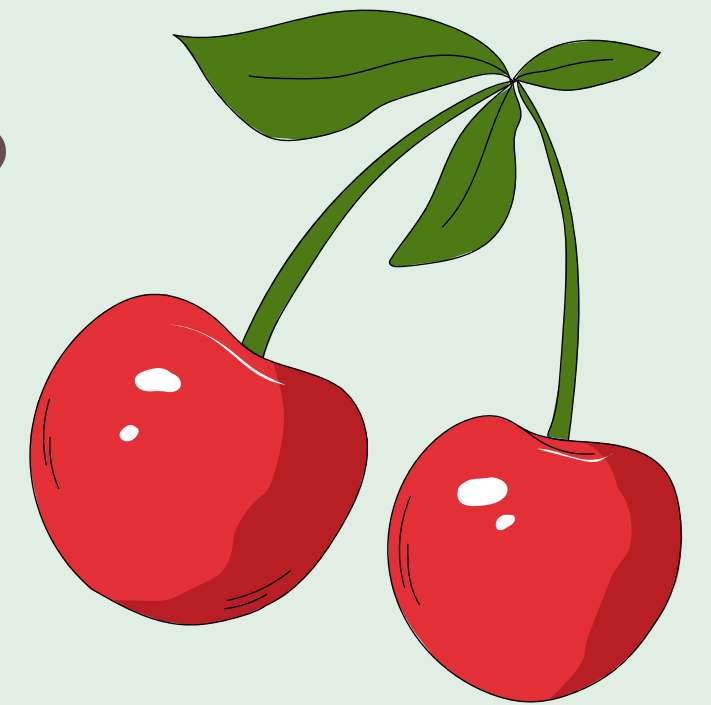
Welcome to Cherry
Class Meet the
Teacher



Miss Cooper & Mrs Echavarria



Staff in Cherry Class

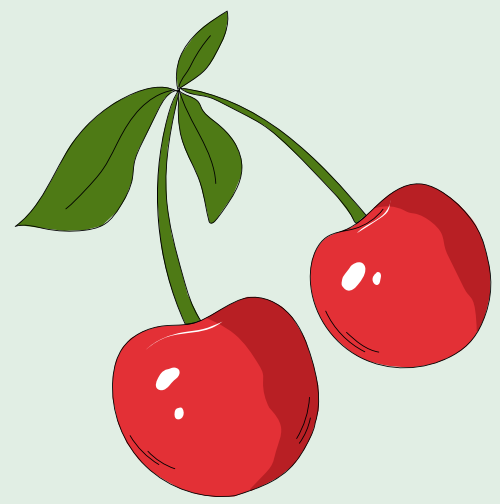


- Miss Cooper: Monday - Friday
- Mrs Echavarria: Monday-Friday (AM only Tuesdays)
- Miss J Gosden: Tuesday PM
- Miss E Gosden - PPA Cover Tuesday AM and Thursday PM

What a fantastic start to term!



The children have made a fabulous start to the term, adapting quickly to the new routines. In return we are all making sure we catch these wonderful behaviours! Our rewards include House Points, Star of the Day, Star of the Week, Academic Star, PE Superstars, Star of the day to name just a few! We are all committed to maintaining a positive atmosphere to learn in and hope you have felt this too.



A day in Cherry Class

Maths

Talk for writing

Assembly/Break

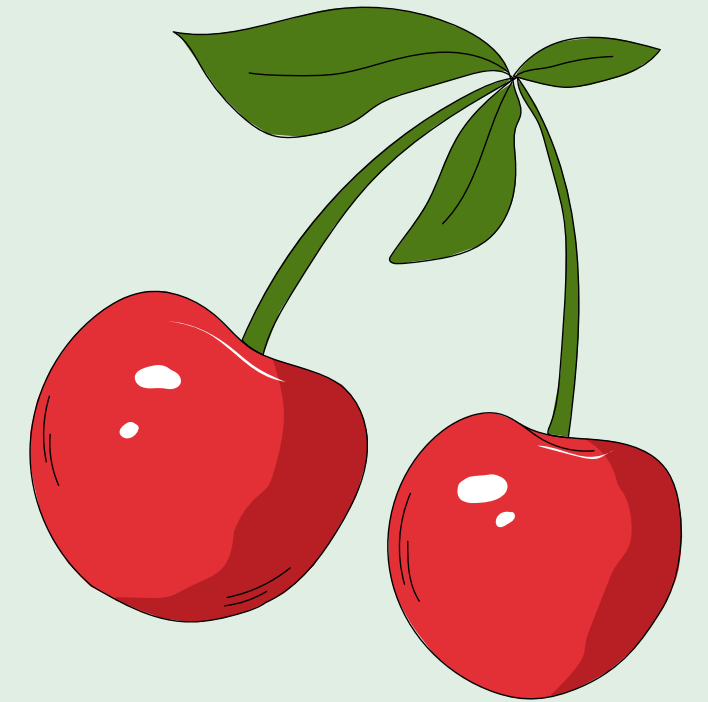
Talk for writing

Phonics

Foundation subjects- e.g. PSHE, art

Reading groups

Mastering number





Daily reading



As you know we hope for the children to be reading every night at home where possible. Please support us by encouraging your child to read, talking about the story and recording on the GoRead App or GoRead online. Sign in with the school code: 40689 and then your child's individual PIN.

It makes it easy for home and school to track the children's reading journey and keeps a permanent log of their progression in reading through their time at primary school.



Spellings



Every Friday, your child will be sent home with a spelling list which will be linked to the sounds and tricky words that we have been learning in our phonics lessons.

(Tricky words are the words that we use a lot in our writing but can't sound out
eg. put, the, come, all)

Year 1 Common Exception Words

the
a
do
to
today
of
said
says
are
were
was

is
his
has
I
you
your
they
be
he
me
she
we

no
go
so
by
my
here
there
where
love
come
some

one
once
ask
friend
school
put
push
pull
full
house
our



Phonics and reading



We will have daily phonics and children will read with an adult 3x per week.

On a Friday, the children will take home their Little Wandle reading book which they should feel confident to read to you.

Children will also take home a library book and a "Read with Me" book which you can read together.

Please return these to school every Friday.

We'll start our phonics by reviewing the sounds from the summer term.



ai



ee



igh



oa



oo



oo



ar



or



ur



er



ow



oi



ear



air



PE days



Cherry Class usually have PE / Games on Mondays and Wednesdays. Children need to come to school dressed in their PE kit.

For health and safety reasons long hair should be tied back in school but particularly in P.E.

- Pierced earrings should be removed for PE. If your child can't take out their own earrings please remove them before school on those days.
- It is your choice if your child wears plimsolls or trainers for outdoor PE but please make sure they can fasten them themselves.



Forest School



Cherry Class will have a Forest School session on Monday afternoons

As the weather becomes more unpredictable, please ensure your child has a pair of wellies and a warm coat / waterproof for both Forest School and for playtimes outside.

Please name them!





Seesaw is primarily an early years platform however we do appreciate that it is lovely to be able to access pictures of what your children are getting up to during the day. We will be using it throughout the year for pictures of the children on trips or during special events in class but it will unfortunately not be as regular as with Year R due to the nature of our curriculum.



How to help at home

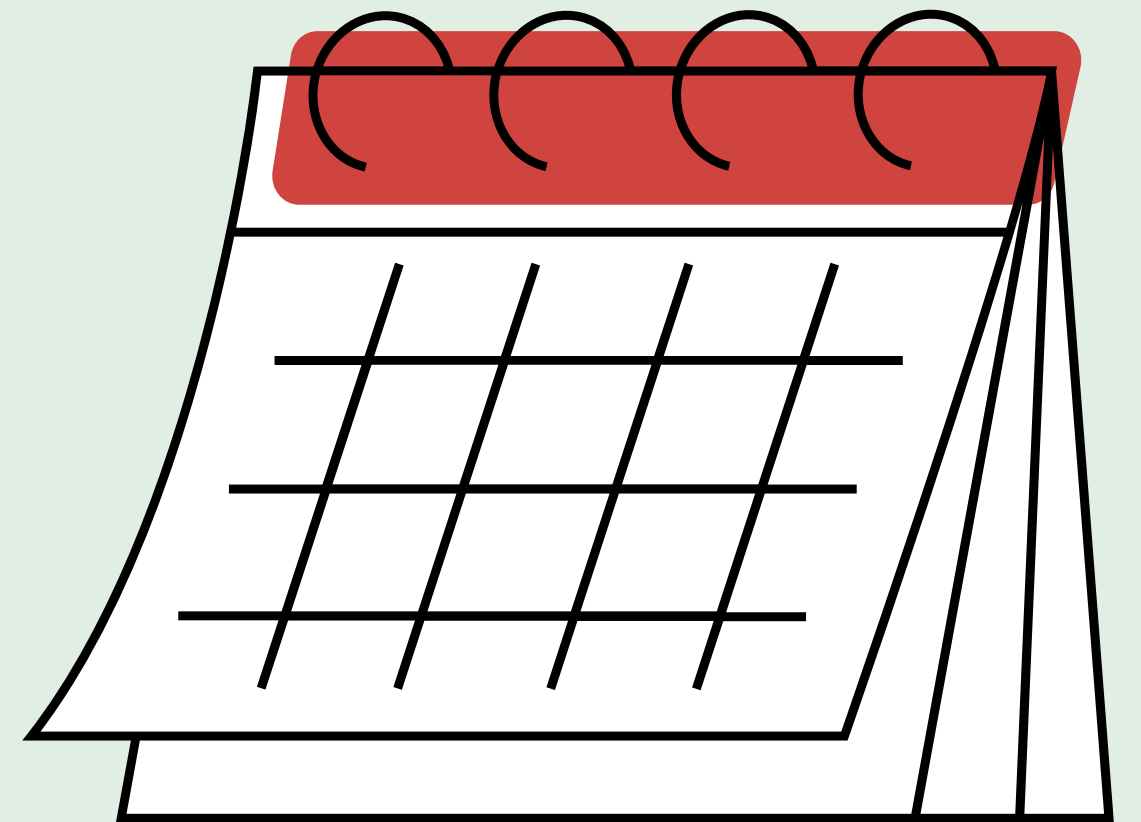
Encourage your children
to sound out words as
much as possible.

[Phonics play.com](https://www.phonicsplay.com)

[Numbots](https://www.numbots.com)

Dates for your diary

- Thursday 17th October – Y1/2 Harvest service@ St Marks Church
- Friday 25th October – End of Term
- 28th October- 1st November – Half Term
- Monday 4th November – Inset Day
- Tuesday 5th November – Start of Term



Some brief reminders

- Please send your child into school with a named water bottle every day, with just water in please as is school policy. We encourage the children to drink throughout the day.
- Please send your children into school with clips to keep their hair from falling in front of their eyes and tie long hair back.
- Please name all of your child's uniform! This includes renaming any uniform passed down from friends.
- All children have a healthy snack provided every day. No fizzy drinks, crisps or chocolate are allowed at break or lunch time.
- If earrings are worn, they must be studs only.



Online safety



Online safety is a big focus for us across the school this year. We will be covering how to be safe on the internet in our PSHE lessons during the year, however, access to the internet is something which takes place in the home.

Please ensure that children are being monitored on the internet and are only accessing age appropriate material. Parental controls within apps and features such as Guided Access on iPads are a great way to ensure you are aware of what your children are accessing.

There have been a few mentions in class of the game Among Us which is rated as a PEGI 7 and contains content that may be upsetting for children of this age.

Any questions or concerns



Please use the Class Teachers or LSAs as your first port of call with any problems or concerns (large or small). We are usually best placed to deal with your queries, and you can catch us at the gate at the end of each day.

Rest assured – your children are all settling beautifully, working well and adapting brilliantly to the new routines of Year 1.

The image features a light green background with watercolor-style leaf patterns in the corners and a central wreath. The wreath is composed of various shades of green leaves and is encircled by a thin, golden-yellow ring. The text "Thank you!" is written in a dark brown, cursive font within the ring.

*Thank
you!*