

Ash

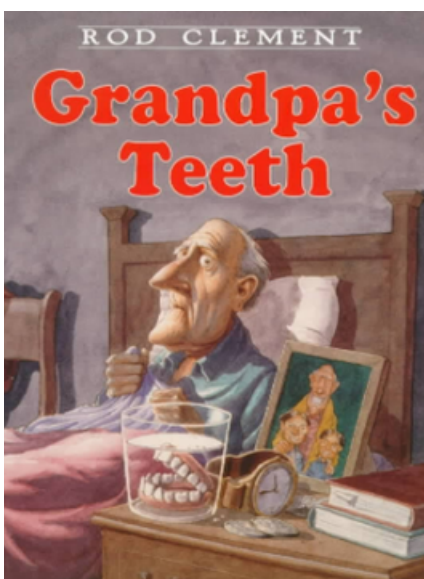
SPRING 1 NEWSLETTER 2025



The children in Ash class will be linking their learning this half term to Ancient Egypt. We will be thinking about the after life, mummification and Tutankhamun before touching on hieroglyphics and the powers of different Gods. We will enhance our learning with a visit to the Haselmere Museum to find out how and why the Ancient Egyptians mummified their dead and will even get a chance to mummify our own toys! The museum even has its own real mummy for the children to see!



Talk 4 Writing



This term, our class text / stimulus for our Talk 4 Writing journey will be Grandpa's Teeth by Rod Clement. We will work towards writing our own losing tale, focusing on character and dialogue.

Our second focus will be on persuasion when we will explore writing to advertise a feature enhancing product for example Wilma's Wonderful Wigs!

Maths

Year 3 will continue the further calculations topic this half term, in which we will explore multiplication and division. We will then progress onto measurement, focusing on length, mass and volume.



Dates for the Diary



06/01/2025 - INSET DAY
07/01/2025 - First day back
30/01/2025 - Visit to Haselmere Museum

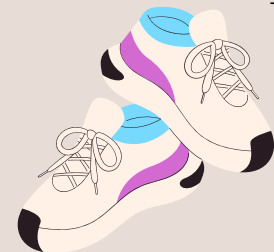
14/02/2025 - Last day of term
24/02/2025 - INSET DAY

Our value this half term is:
Perseverance

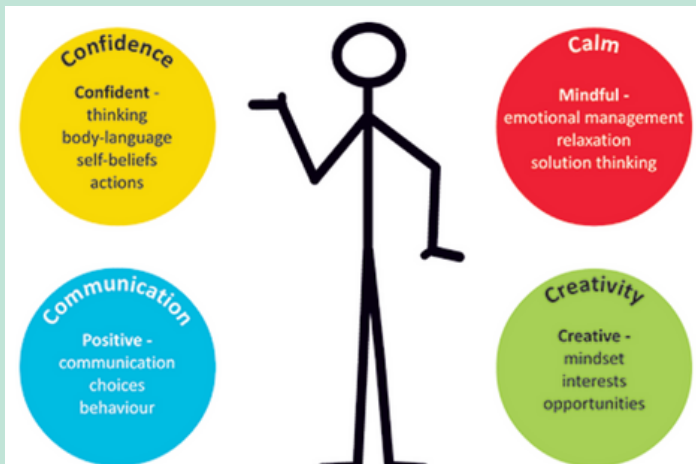
Things to remember:

Our class PE days are Mondays and Wednesday, remember to come to school in PE kit and as the weather is still chilly and changeable make sure that Black Jogging bottoms are also worn.

Gentle reminder about earrings not being worn on PE days as the children struggle to take them out. Please remember to bring wellington boots back to school after the holidays as we use them daily.



Ash are learning to use the **Trickbox** tricks to help with emotional management and personal development.



For more information, go to <https://trickbox.co.uk>

How to help at home...



Read with your child (20 minutes daily).

Please make sure that you login and record your child's reading daily using the Go Read app or online at <https://go-read.co.uk/>. Individual login details for your child will be provided. You can log reading retrospectively if you do not have your phone near you when you are listening to your child read. The Children also earn leaves for our reading tree in class and get very excited when their leaf is added to the tree.

Encourage your child to practise their weekly spellings (10 minutes daily).

Every Friday, your child will be sent home with their new spellings. The spellings will also be on Spelling Shed where your children can practice their spellings through games. Learning spellings is so important as it forms part of their criteria for being expected Year group ready.

Encourage your child to practise their times tables (10 minutes daily).

Recall of the 3, 4, 8 and 50 times tables (as well as the 2, 5 and 10 times tables covered in Year 1 and 2) is important. Children will be given access to Times Tables Rock Stars to use at home.

*Going forward weekly tasks will also be set on <https://www.spag.com/> to help your child with spelling and grammar, although this will be gradually introduced.